



## BSF70 FOLDING DOOR SYSTEM

Versatile and flexible, the market leading BSF70 aluminium folding door system is available in a wide range of configurations to create the look you desire. Multiple doors can be combined with open-in or open-out options, in a variety of styles to create a wide expanse of opening. The narrow profile ensures that maximum glazing is achieved, flooding rooms with light.

### DESIGN FEATURES

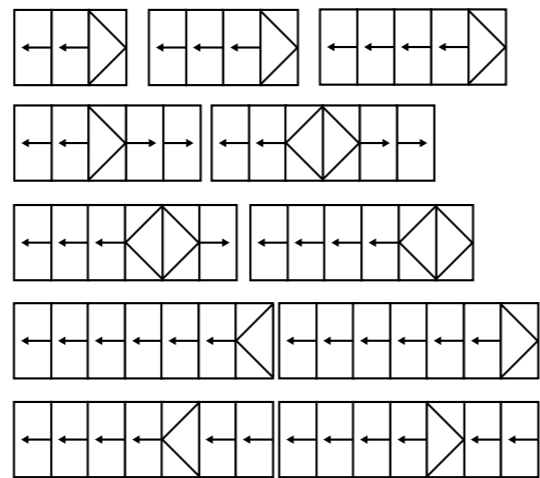
- Internally beaded with a soffline or square detail to all external doors and panels
- Chamfered and square bead options
- Four stainless steel wheels ensures smooth and consistent operation
- Unique, flush line pop-out handle that allows maximum door opening and square stacking panels
- Low threshold option which can be configured to achieve DDA and Part M compliance
- Certified under Secured by Design scheme

### OPTIONS

- Doors and panels can be used in a variety of configurations, style and design
- All configurations are available in both open-in and open-out options
- Full range of bespoke hardware available
- Glazing sizing range of 28mm – 44mm
- Available in single or dual colour option, polyester powder coating and anodised finishes

### CONFIGURATIONS

The BSF70 folding door system is available in a wide range of configurations as demonstrated below. Panels can be stacked inside or outside, to the left or right, or split stacked on both sides.



## BSF70 FOLDING DOOR SYSTEM TECHNICAL SPECIFICATIONS

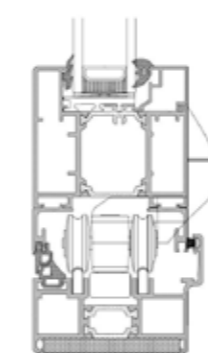
Combining high security hinges and locking mechanisms with a unique high strength roller designs, the BSF70 aluminium folding door system provides the security and reliability demanded in high traffic applications. Doors can be manufactured to replace

whole walls and a full range of colours are available, including single or dual aspect. Anodised finishes are also available with marine grade guarantees on request.

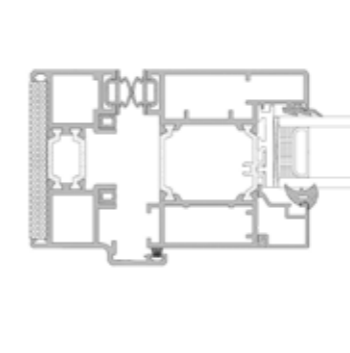
SPECIFICATIONS	FOLDING SLIDING	SINGLE & DOUBLE DOOR
<b>Performance &amp; Accreditation</b>		
U-Value (Double Glazing)*	1.7 W/m²K	1.8 W/m²K
U-Value (Triple Glazing)**	1.6 W/m²K	1.4 W/m²K
Green Guide Rating	A Rated	A Rated
Acoustic Performance (dB)	Rw (C;Ctr) 36 (-1;-3) dB	Rw (C;Ctr) 36 (-1;-3) dB
Air Tightness (Pa)	Class 4	Class 4
Water Tightness (Pa)	Class 7a	Class 7a
Wind Load (Pa)	Class E2400	Class E2400
Security	PAS 24	PAS 24
<b>Configurations</b>		
Opening	Open In & Open Out	Open In & Open Out
2-2-0	●	--
3-3-0	●	--
3-2-1	●	--
4-4-0	●	--
4-2-2	●	--
4-3-1	●	--
5-5-0	●	--
5-3-2	●	--
5-4-1	●	--
6-6-0	●	--
6-3-3	●	--
6-4-2	●	--
6-5-1	●	--
7-7-0	●	--
7-4-3	●	--
7-5-2	●	--
7-6-1	●	--
<b>Size Limits</b>		
Max Vent Weight	100 Kg	100 Kg
<b>System Features</b>		
Frame Options	70mm	94mm 70mm
Dual Colour Option	●	●
Multi-Point Locking	●	●
Glazing Options	Internal	Internal
Glazing Thickness	24mm-44mm	24mm-44mm

### CAD CROSS SECTION AND THERMAL PROFILE

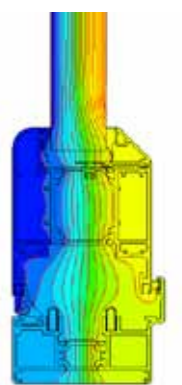
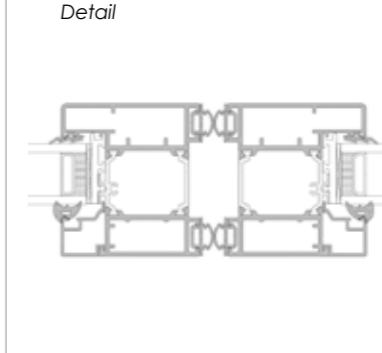
Cill Detail



Jamb Detail



Leaf-Leaf Detail



\* Door U-Values based on CEN size ≤ 3600mm² using 1.2 W/m²K double glazing with warm edge Swisspacer V bar. \*\* U-Values based on CEN size ≤ 3600mm² using 0.7 W/m²K triple glazing with warm edge Swisspacer V bar. All weather test data taken from BS EN 6375-1 (Part of Pas 23) based upon highest performing door configuration. Sound insulation values are Rw reduction values and are based on tests using acoustic glazing.

Please note: NBS Specifications are available for all products and BIM Components for many. Please visit [www.expresshomeimprovements.org](http://www.expresshomeimprovements.org)